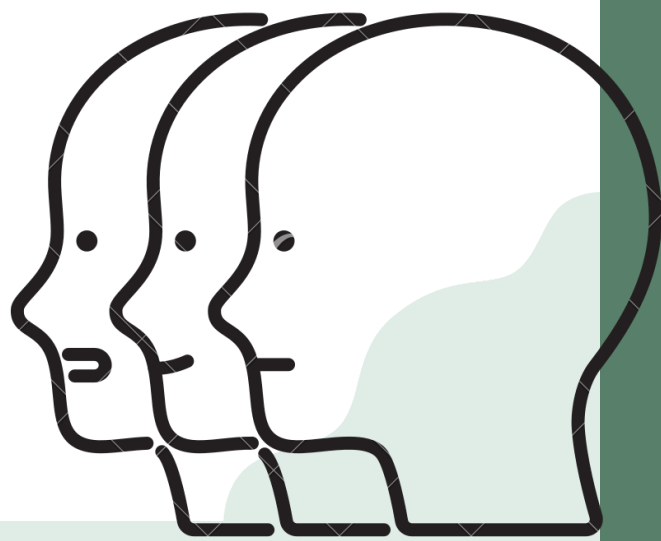


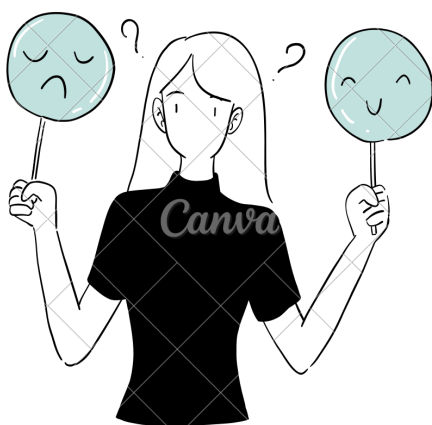
# Organic Personality Disorder



- An organic mental disorder is a previously used term to describe a dysfunction of the brain that was meant to exclude psychiatric disorders. It is currently known under the category of neurocognitive disorders. It describes reduced brain function due to illnesses that are not psychiatric in nature.

Sometimes the term organic mental disorder is used interchangeably with the terms organic brain syndrome (OBS), chronic organic brain syndrome, or neurocognitive disorder—this latter term is the one used more commonly now.

## Causes:



Organic mental disorders are disturbances that may be caused by injury or disease affecting brain tissues as well as by chemical or hormonal abnormalities. Exposure to toxic materials, neurological impairment, or abnormal changes associated with aging can also cause these disorders. Alcohol, or metabolic disorders such as liver, kidney, or thyroid disease, or vitamin deficiencies, may be factors too. Concussions, blood clots, or bleeding in or around the brain from trauma may lead to organic brain syndrome. Low oxygen in the blood, high amounts of carbon dioxide in the body, strokes, brain infections, and heart infections can lead to an organic mental disorder as well. Degenerative disorders like Parkinson's disease, Alzheimer's disease, Huntington disease, and multiple sclerosis may also be contributing factors.

## Symptoms:

- Primary Symptoms
- Confusion
- Agitation
- Irritability
- A change in behaviour, impaired brain function, cognitive ability, or memory



## Treatments:

- Blood tests, spinal taps, or an electroencephalogram may be administered to diagnose organic brain syndrome or an organic mental disorder. Imaging of the brain, like a CT scan or MRI, is also useful, depending on a doctor's suspicion.

Treatments for organic mental disorders vary on what the underlying cause of the disorder is. Medication may be prescribed or rehabilitation therapy may help patients recover function in the parts of the brain affected by the organic mental disorder.

